

IBR's Top Projects finalists are up for awards

By JEANNE HUFF
Idaho Business Review

Construction is booming in Idaho; downtown cranes have become part of the skyline. *Idaho Business Review* recognizes that and annually celebrates top projects across Idaho. And for the first time, a review committee made up of industry experts and professionals is weighing in.

This year, 39 finalists in four categories – public, private, infrastructure and transportation – will vie for first, second and third place awards, with one other taking top prize over all. A number of others may receive honorable mentions for being the most sustainable or unique, for integrating locally sourced materials, or for coming in way under budget.

Many of the local experts judging the finalists said it wasn't an easy process. "After reviewing the 2014 Top Projects applications, it was difficult to determine the best of the best," said Scott Raeber, associate broker for Colliers International. "Despite 2014 going down in the record books as a recovery year in commercial real estate, there were many sizable developments setting new standards for high quality."

The review process is still underway. The 12-member review committee members judge each project on quality, challenges overcome, scope of work, and adherence to budget and schedule.

The top and bottom scores will be tossed out and the other scores averaged to come up with the award winners.



Photo courtesy of Steed Construction

951 Front is one of the Idaho Top Projects finalists.



Photo courtesy of Patano Studio Architecture

The University of Idaho Reveley Classroom Building is one of the finalists for IBR's Idaho Top Projects.

Idaho Top Project finalists, all completed in Idaho in 2014 and all more than \$1 million:

NORTH

Moscow

- U of I Reveley Classroom Building

Orofino

- Orofino WTP

CENTRAL

Custer County

- East Fork Salmon River Bridges

McCall

- Payette National Forest Supervisor's Office

- Union Eagle Island Branch

- Involta Victory View Datacenter

- Ruth's Chris Steak House

- Sage International School

- Treasure Valley Family YMCA West

Eagle

- Mountain West Financial Center

- Edgewood Independent Living Cottages

Garden City

- Grace Assisted Living

SOUTHWEST

Ada County

- Ada County Landfill Hydrogen Sulfide Scrubber Project

- Highway 16 Extension

Boise

- 951 Front apartments

- Boise Tech Mall

- Cathedral of the Rockies Amity Campus Expansion

- Depot Lofts

- Eighth and Main

- Holland & Hart

- Idaho Central Credit

Elmore County

- CJ Strike Bridge

Twin Falls

- CSI Applied Technology & Innovation Center

- Idaho Central Credit Union Addison Branch

- Idaho Central Credit Union Blue Lakes Branch

- Idaho Central Credit Union Hitt Road

Kimberly

- LA Thomas Gymnasium

SOUTHEAST

Rexburg

- Idaho Central Credit Union

- North Point Apartments

Idaho Falls

- Idaho Central Credit Union Hitt Road

- Melaleuca Global Headquarters

- Project Nucleus Biological Treatment System

Ammon

- D.L. Evans Bank

American Falls

- American Falls WWTP Improvements

Idaho Top Projects review committee members:

Sheree Willhite, commercial program specialist, Idaho Power

Charlie Woodruff, executive director, U.S. Green Building Council, Idaho

Dave Winder, director, investment specialist, Commerce Real Estate Solutions

Wayne L. Hammon, CEO, Idaho Associated General Contractors

Scott W. Raeber, associate broker, Colliers International

Mike Greene, broker, Thornton Oliver Keller

Rob Thornton, principal, CTY Architects

Brook Blakesley, principal, retail brokerage specialist, Colliers International

Julie Marple, vice president, Northwest Real Estate Capital Corp.

John Brunelle, executive director, Capital City Development Corporation

Steve Trout, principal, Trout Architects

Thomas Zabala, former principal, ZGA Architects

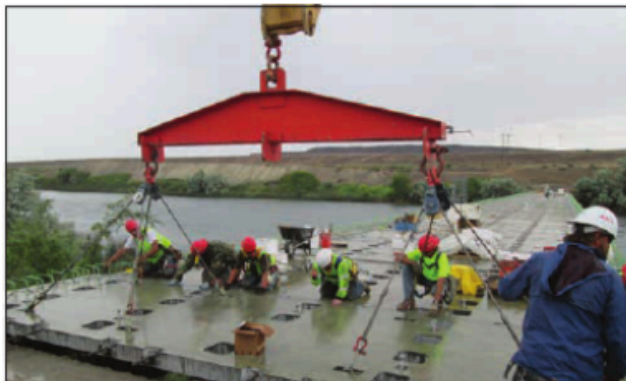


Photo courtesy of RSCJ

The CJ Strike bridge is one of the finalists for IBR's Idaho Top Projects.

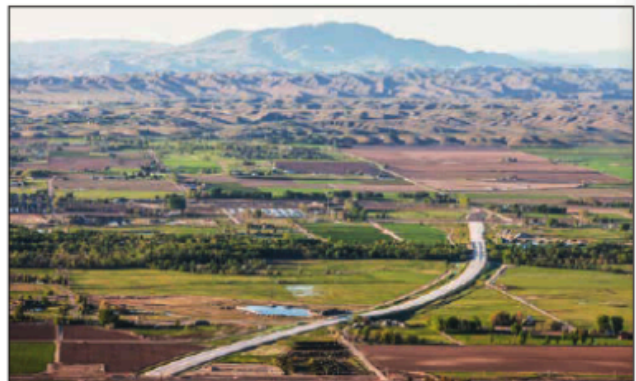


Photo courtesy of Parametric

Highway 16 Extension is an Idaho Top Projects finalist.